



**PROTECT CHILDREN - STRENGTHEN FAMILIES - PREVENT CHILD ABUSE**

**9,329**  
Stays



**CRISIS NURSERY**

**229**  
Housed



**LIFESTART VILLAGE**

**3,226**  
Sessions



**CLINICAL SERVICES**

**58**  
Families



**FAMILY MENTORING**

**192**  
Visits



**ADOPTION RESPITE**

**VOLUNTEERS**

**1,068**  
Volunteers



**80**   
Group Projects

 **12,745**  
Hours Donated



**TOTAL ANNUAL SERVICE**

**2,556** Individuals  
Hours of Direct Care **59,011**

**DONORS**

**101** Grants  
Received

**\$154,399**  
In-Kind  
Donations



Thank you to our many  
generous donors.  
You make this all possible!

Visit our website  
for our most recent Form 990,  
and a list of donors.

**Family Support Center**  
1760 West 4805 South  
Taylorsville, Utah 84129

**801-955-9110**  
[www.FamilySupportCenter.org](http://www.FamilySupportCenter.org)



# OUTCOMES

**90%** of Clinical Service clients reported an increase in their quality of life



**78%** of Family Mentor families reported a noticeable improvement in family relations



**91%** of parents utilizing the Crisis Nurseries reported the initial crisis or reason for needing the service was resolved



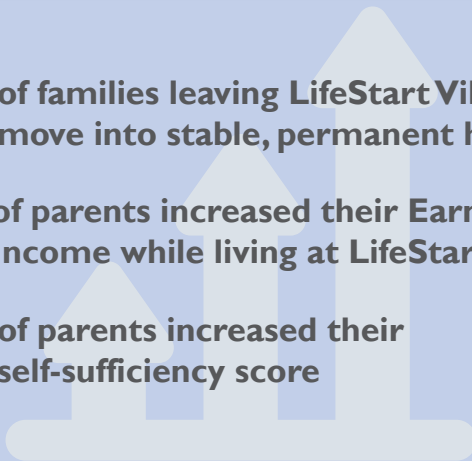
## LIFESTART VILLAGE



**73%** of families leaving LifeStart Village move into stable, permanent housing

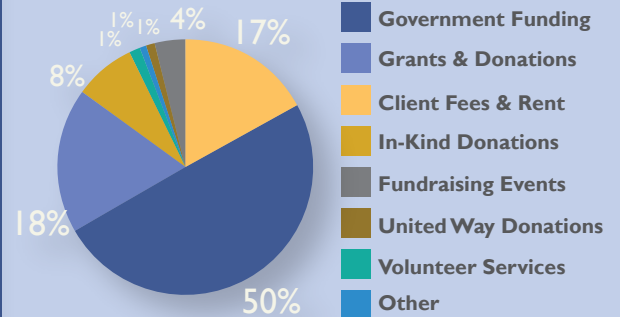
**45%** of parents increased their Earned Income while living at LifeStart Village

**91%** of parents increased their self-sufficiency score



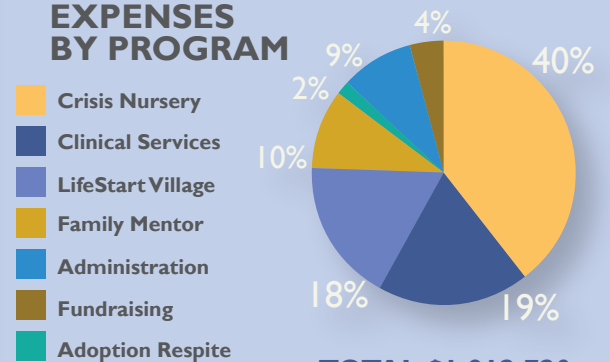
## FINANCIALS

### REVENUE SOURCES



TOTAL \$1,965,515

### EXPENSES BY PROGRAM



TOTAL \$1,912,720

